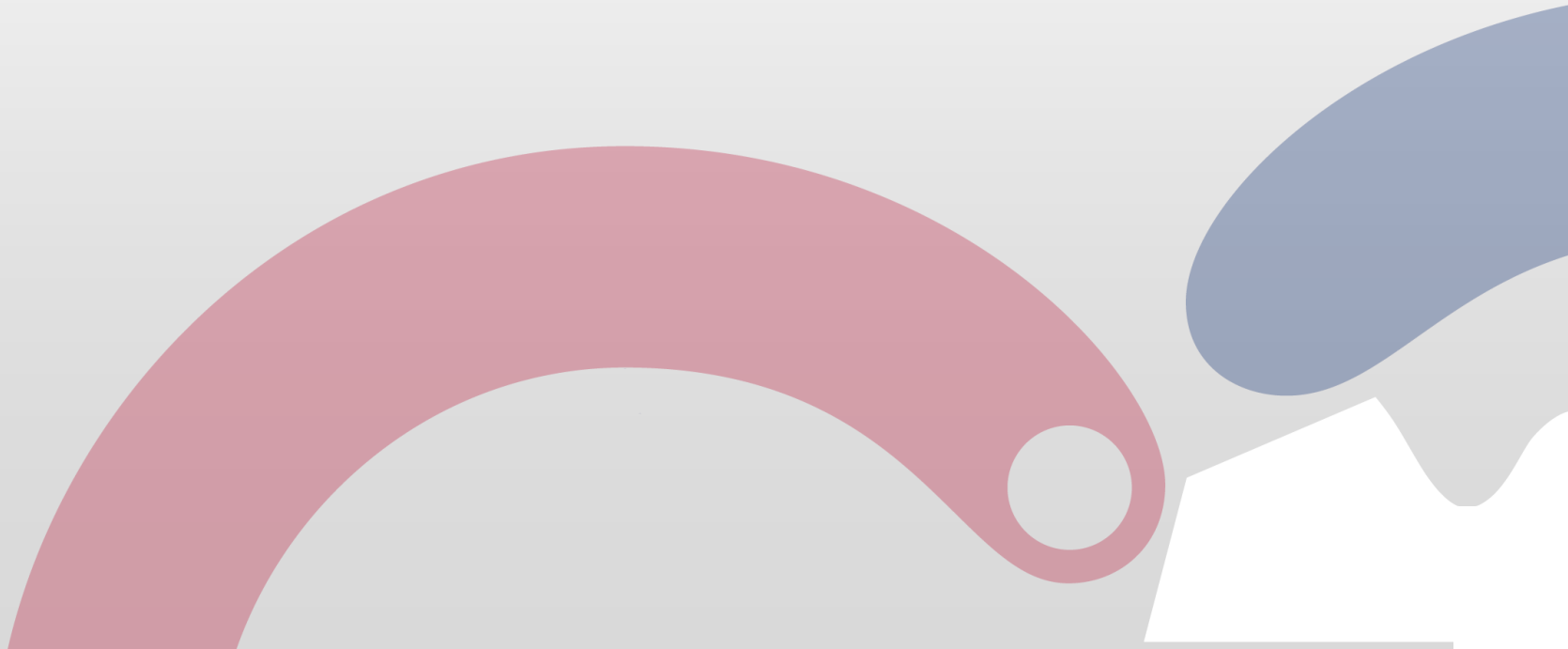


# Zenflow™ Tiger Balloon Dilatation Catheter



# Zenflow™ Tiger

1

Large diameter PTA catheter with braided inner shaft provides excellent pushability and kink resistance)

2

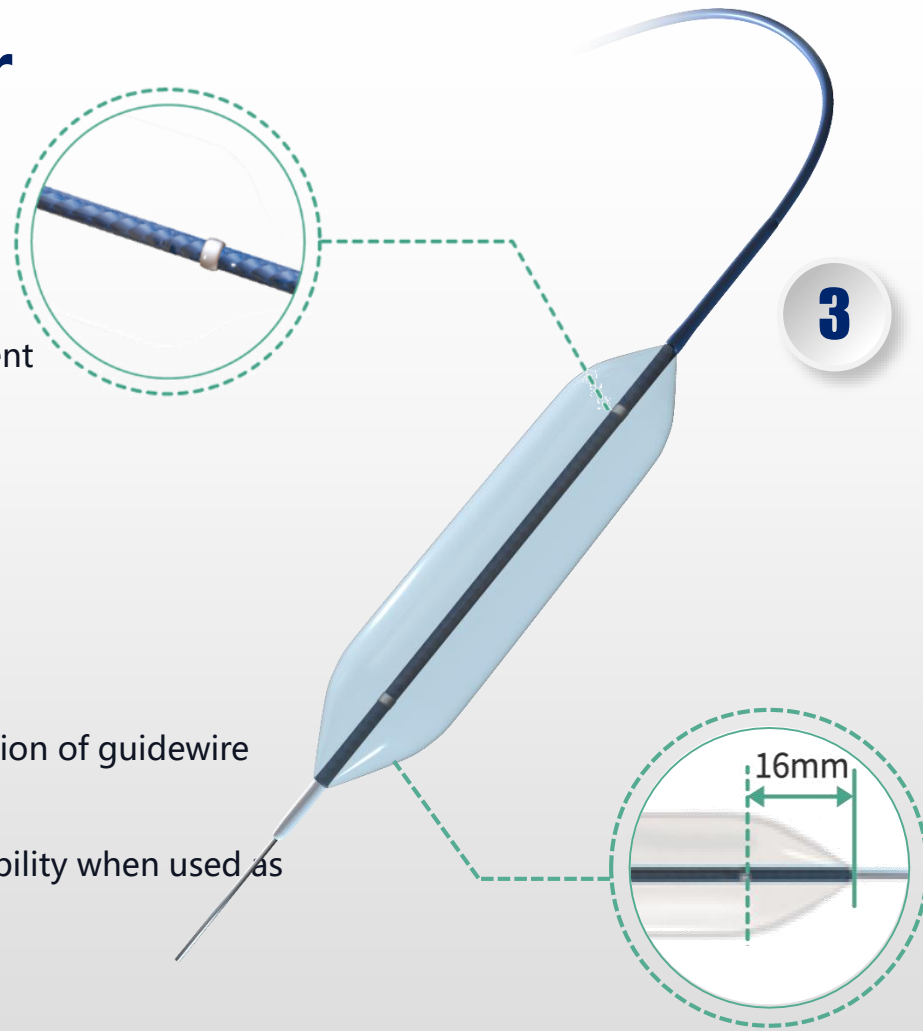
Tapered tip enables smooth transition of guidewire and improves crossing profile.  
Radiopaque tip provides good visibility when used as a flush catheter.

3

Large lumen coaxial shaft improves contrast medium injection and accelerates balloon inflation/deflation saving operation time

4

Short shoulder design facilitates crossability and precise dilation in tortuous vessels  
Minimizes the dilation of healthy vessel/side branches that are not intended to be dilated.



# Specification

Balloon Diameter (mm)	Balloon Length (mm)	NP (atm)	RBP (atm)	Sheath (F)	Catheter Length			
					40cm	60cm	80cm	110cm
12	20	4	6	7	ZWL1220040	ZWL1220060	ZWL1220080	ZWL1220110
12	40	4	6	7	ZWL1240040	ZWL1240060	ZWL1240080	ZWL1240110
12	60	4	6	7	ZWL1260040	ZWL1260060	ZWL1260080	ZWL1260110
12	80	4	6	7	ZWL1280040	ZWL1280060	ZWL1280080	ZWL1280110
14	20	4	6	8	ZWL1420040	ZWL1420060	ZWL1420080	ZWL1420110
14	40	4	6	8	ZWL1440040	ZWL1440060	ZWL1440080	ZWL1440110
14	60	4	6	8	ZWL1460040	ZWL1460060	ZWL1460080	ZWL1460110
15	20	4	6	9	ZWL1520040	ZWL1520060	ZWL1520080	ZWL1520110
15	40	4	6	9	ZWL1540040	ZWL1540060	ZWL1540080	ZWL1540110
15	60	4	6	9	ZWL1560040	ZWL1560060	ZWL1560080	ZWL1560110
16	20	4	6	10	ZWL1620040	ZWL1620060	ZWL1620080	ZWL1620110
16	40	4	6	10	ZWL1640040	ZWL1640060	ZWL1640080	ZWL1640110
16	60	4	6	10	ZWL1660040	ZWL1660060	ZWL1660080	ZWL1660110
18	20	4	6	10	ZWL1820040	ZWL1820060	ZWL1820080	ZWL1820110
18	40	4	6	10	ZWL1840040	ZWL1840060	ZWL1840080	ZWL1840110
18	60	4	6	10	ZWL1860040	ZWL1860060	ZWL1860080	ZWL1860110
20	20	4	6	11	ZWL2020040	ZWL2020060	ZWL2020080	ZWL2020110
20	40	4	6	11	ZWL2040040	ZWL2040060	ZWL2040080	ZWL2040110
20	60	4	6	11	ZWL2060040	ZWL2060060	ZWL2060080	ZWL2060110
22	20	3.5	5	12	ZWL2220040	ZWL2220060	ZWL2220080	ZWL2220110
22	40	3.5	5	12	ZWL2240040	ZWL2240060	ZWL2240080	ZWL2240110
24	20	3.5	5	12	ZWL2420040	ZWL2420060	ZWL2420080	ZWL2420110
24	40	3.5	5	12	ZWL2440040	ZWL2440060	ZWL2440080	ZWL2440110
25	20	3.5	5	12	ZWL2520040	ZWL2520060	ZWL2520080	ZWL2520110
25	40	3.5	5	12	ZWL2540040	ZWL2540060	ZWL2540080	ZWL2540110